



ATLAS  
KITCHEN & CLOSETS

# CLOSETS CATALOG



# TABLE OF CONTENTS

ITEMS	PAGE
Warranty .....	04
Lead time production & delivery   Installation.....	05
Installation terms.....	06
Available Colors .....	07
Sides Closets Details.....	08
Closets Modules.....	09
Drawers .....	14
Doors.....	15
Hardware & Fittings.....	16
Accessories.....	18

# WARRANTY

## LIMITED WARRANTY



### I. Description of Warranty

This warranty applies only to the original consumer purchaser for 1 year from obtaining the product and is not transferable. Atlas warrants all of its cabinetry with a 1 year Limited Warranty. In the event that any Atlas product fails during the course of normal use, Atlas will either repair or replace the defective product at its own discretion and as determined solely by Atlas.

### II. Intended Use of Product

To be covered by this warranty, the product must only be used for its intended purpose(s). Cabinets that have been improperly stored, installed, misused, modified, abused, mishandled, and or subject to excessive moisture or extreme temperatures are not covered under this warranty. Whether the work was performed by a contractor, Atlas or yourself, any expenses involved in the shipping, removal, installation, or consequent damage of the defective product is not covered under this warranty. This warranty does not apply to products installed in mobile homes or recreational Vehicles.

### III. Anticipated Variance in Product

The Atlas warranty only applies to product defects and does not apply to properties of the material used that are subjective in such products. Anytime you have a natural wood product, occurrences such as pinholes, knots, and variance in color or grain must be anticipated and, therefore, are not covered under this warranty. With any material prolonged exposure to light, heat, or aging may cause a change in color. Any event caused by environmental or chemical effects to the product are not covered under this warranty.

The properties of any wood are such that it can react to climactic or humidity changes found within most homes. As much as half of the weight of freshly cut wood is water. Atlas doors are manufactured from particle boards that has been carefully kiln dried, retaining just enough moisture for proper construction and finishing. The center panels of some of the Atlas doors are PB and some are medium density fiberboard. As a product of nature, solid hardwoods continue to react to their surroundings long after manufacture. When cabinet doors are in a warm, moist environment (high relative humidity), they expand. In a dry, colder environment (low relative humidity), they will contract. Expansion and contraction can be controlled but never eliminated even with humidity regulation. Melamine doors are designed to perform well in controlled interior applications. Like all wood products, they are also affected by their environment and will respond adversely to abnormal heat, humidity, dryness or cold. Problems associated with extreme environmental conditions are not covered under this warranty. Atlas does not consider the appearance of an unfinished line as a product defect and will not replace doors due to this situation. It is recommended that a humidity control system is incorporated in a home to reduce the possibility of expansion and contraction in wood products.

All of the doors for Atlas cabinetry are manufactured in controlled environments under precise tolerances. Although slight door wardrobe can be common in one or two doors within a newly installed kitchen, any door

that has not hung through a complete heating and cooling cycle has the possibility of warping. Slight warpage can be eliminated through adjustments of the adjustable hinges.

Normal movement is typical on all cabinet materials, certain climatic conditions can cause finish breaks, recesses, and joint and panel lines. An open joint line is not considered a defect and is not covered under this warranty. Proper humidification of homes in extremely dry environments is strongly recommended. Discoloration may develop on doors, drawers, and cabinet parts over time or after continued exposure to smoke. This is remarkably apparent on lighter finishes. We do not warrant discoloration in our products due to exposure to smoke of any kind.

### IV. Product Repair or Replacement

Throughout the duration of the warranty period, Atlas sole obligation is to repair or replace any defective product for no charge at the discretion of Atlas. This warranty only applies to cabinets and affiliated products sold by Atlas. The warranty does not cover the removal, transportation or installation of the defective or replacement material. The warranty only apply if Atlas if the product was installed by Atlas personnel, if the cabinets were installed by third parties, the warranty does not apply. Any items not specifically manufactured by Atlas will be subject to the warranty of the original manufacturer and dependent on the availability from our supplier. Atlas will not be liable for damage due to installation, removal, repair or labor charges. Warranty is limited to replacement or repair of defective parts or materials only. In the event that a claim is filed after the original product has been discontinued or cancelled, Atlas will honor the warranty, at their discretion, subject to the availability of the product, by either:

**Repairing or replacing the defective product with a new product of the similar style.**

**Repairing or replacing the defective product with a product of equal value and complementary style in order to maintain the appearance of the original cabinetry purchase.**

An exact match between the finish of the original purchased product and the replacement or repaired product is not guaranteed.

### not guaranteed.V. Rights of Consumer

There are no other warranties, disclosed or indicated, associated with this product. This document serves as a description of the consumers definitive legal rights within the transaction and is the exclusive warranty of Atlas. The exclusion or partial limitation of contingent or substantial damages is not permissible in some states. The consumer may also have further rights from state-to-state which are not cited in this warranty.

### VI. Submission of a Claim

All claims must be submitted to Atlas where the cabinets were originally purchased. Claims are to be submitted in writing. Client must notify Atlas within 10 days of discovering an item in need of warranty. Failure to notify within 10days may, at contractor's discretion void this warranty. Client's hiring of others or direct actions by Client or Clients 's separate contractors to repair a warranty item are not covered by this warranty and will not be reimbursed by Atlas. Every claim must include a dated copy of the original sales receipt as a proof of purchase. Unless and until the product is specifically requested by Atlas, please do not send the defective item(s).

# ATLAS

## LEAD - TIMES



**NOTE: All Lead-Times take affect once ATLAS has accepted the order and have received the first payment.**

MANUFACTURE	TIME
Atlas Standard closets	2 Weeks
Atlas Custom closets	3-4 Weeks

### ***Cancellation Terms***

Clients have the right to cancel orders up to three days after placing the order. The client will incur a 30% fee for doing so.

<b>DELIVERY TIME</b>
3-4 working days
<b>DELIVERY TERMS</b>
From manufacture to job-site download is nor included, it's needed you most notify in advance
<b>INSTALLATION TIME *OPTIONAL*</b>
2-3 Days when job-site is ready for installation

# INSTALLATION

## TERMS

- 1) Job site will be ready and clean to installers
- 2) All old furniture (just in case) will be removed
- 3) All walls must be painted or fix in case the install without backing closets
- 4) The baseboard must be defined if will be removed or not
- 5) If baseboard keep in walls, the installers must make a knock in all sides of closets
- 6) The installer must leave all closets installed, clean, with caulking and setup
- 7) The installer is not allowed to move any of the customers personal clothing, neither outside the furniture nor inside it
- 8) The installer, before leaving must request from the customer the signature of a release of delivery and full satisfaction

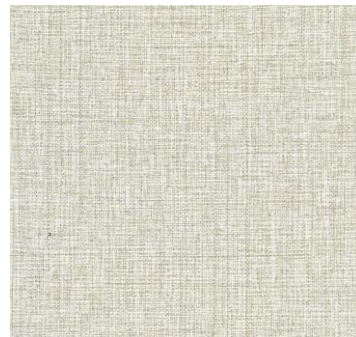
# AVAILABLE COLORS



PB-WF464 NOCE URBAN\*



PB-WF459 ABIQUA PINE\*



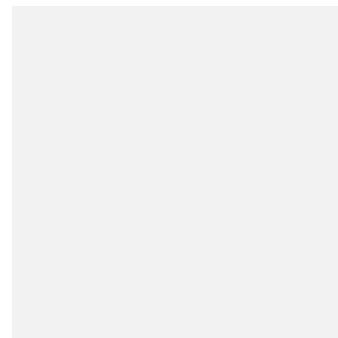
PB-AF232 NATURAL LINEN



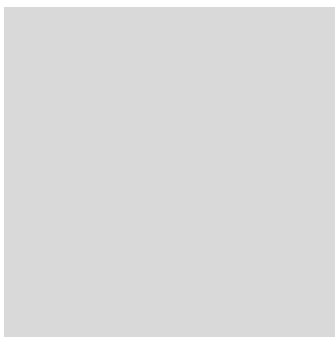
PB-467 PELEE ISLAND\*



PB-WF301 NOCE VETTORE\*



PB-M002-IM- MELAMINA  
BLANCA



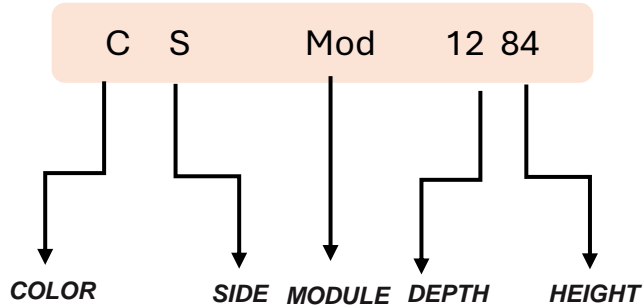
PB-SF208 FOLKSTONE  
GREY

# CLOSETS

## SIDE-DETAILS

STANDARDS (S) HEIGHT 84"

### CLOSET PARTS



CODE	
S -1284	<p><b>All sides coming with edge banding color matching edge front side</b></p>
S -1484	
S -1684	
S -1884	
S -2084	
S -2284	
S -2484	



Thickness  $\frac{3}{4}$ "

- Edge 1 side
- Drilled holes 5mm
- Ready to Ship
- No groove for backing





ATLAS  
KITCHEN & CLOSETS

# CLOSETS

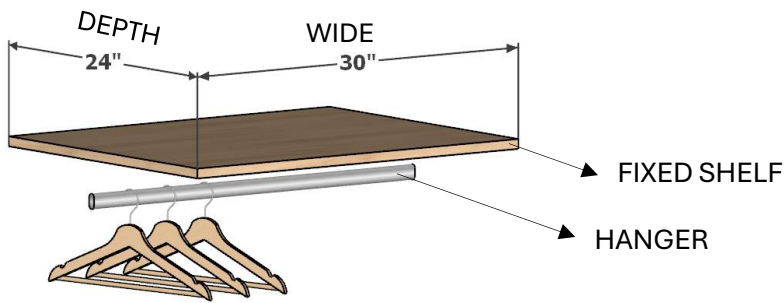
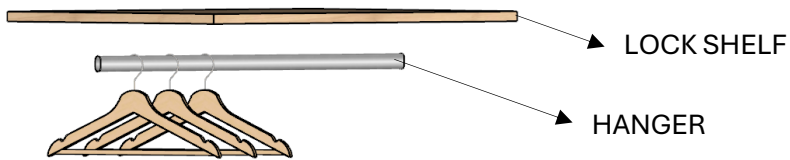
Module Details

# CLOSETS

## MODULES

## DOUBLE HANG

MOD #100



### INCLUDES

RAFIX	8
PIN	4
TUBE	1
SUPPORT	2

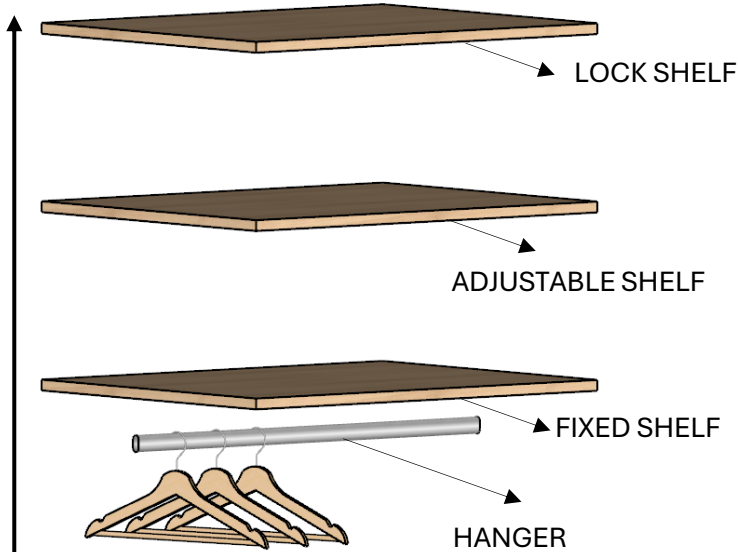
WIDE: 12" - 15" - 18" - 20" - 24" - 30" - 36"

# CLOSETS

## MODULES

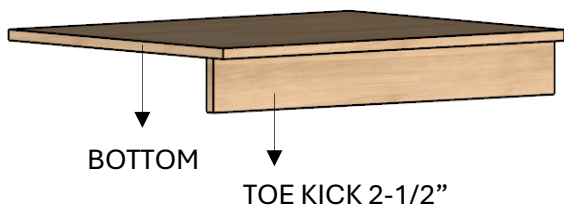
### MEDIUM HANG

MOD#101



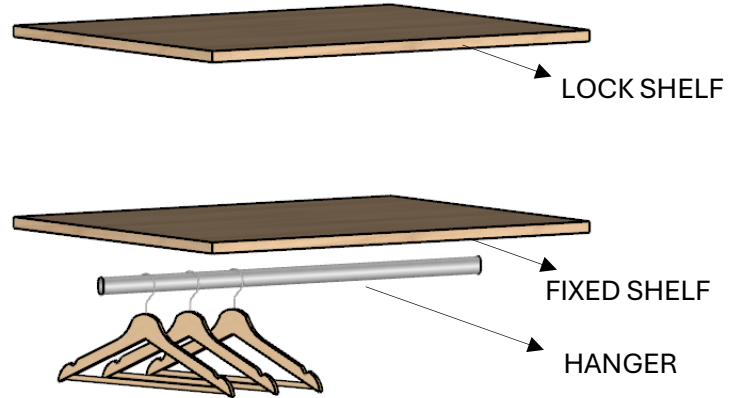
84"

INCLUDES	
RAFIX	12
PIN	4
TUBE	1
SUPPORT	2

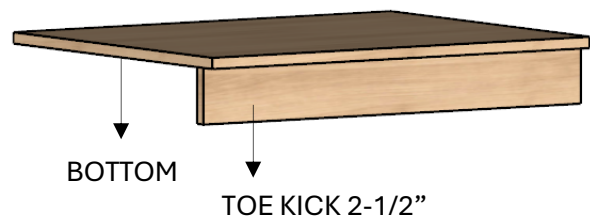


### TALL HANG

MOD#102



INCLUDES	
RAFIX	12
TUBE	1
SUPPORT	2



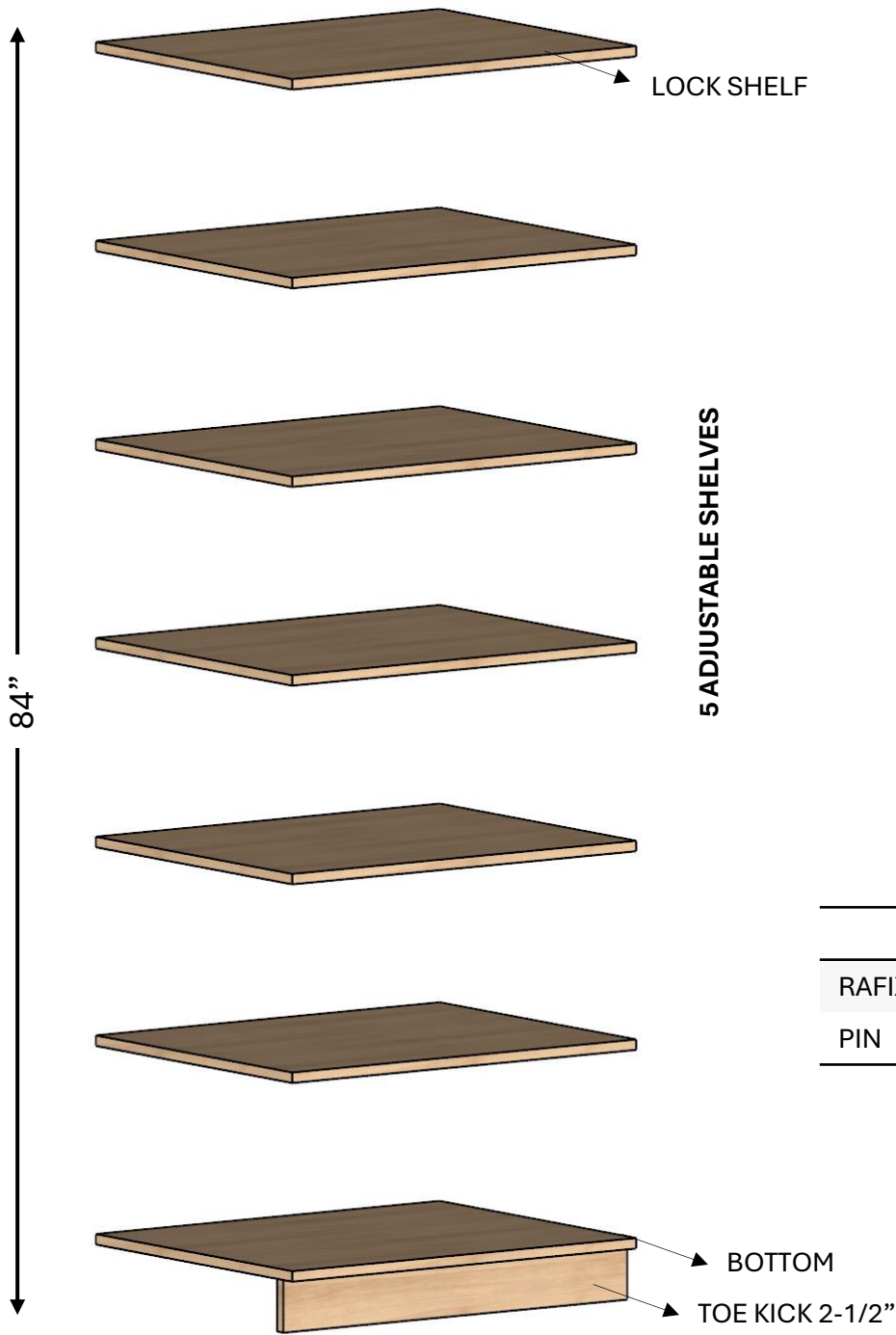
WIDE: 12" - 15" - 18" - 20" - 24" - 30" - 36"

# CLOSETS

## MODULES

## SHELVING

MOD#200



INCLUDES	
RAFIX	12
PIN	16

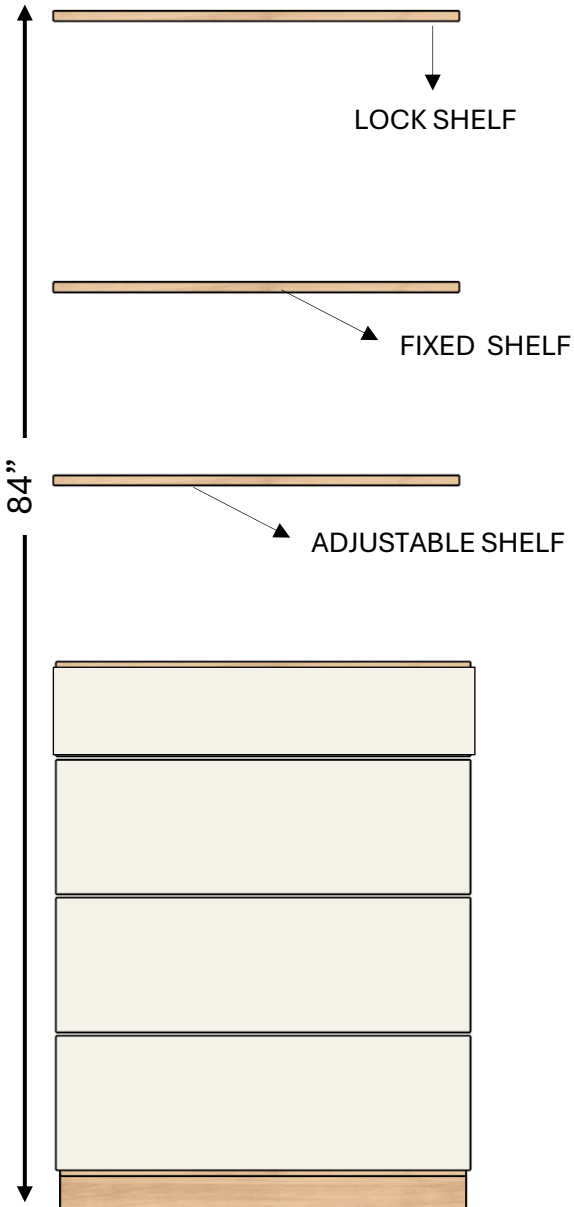
WIDE: 12" - 15" - 18" - 20" - 24" - 30" - 36"

# CLOSETS

## MODULES

### DRAWERS SHELVES

MOD#300



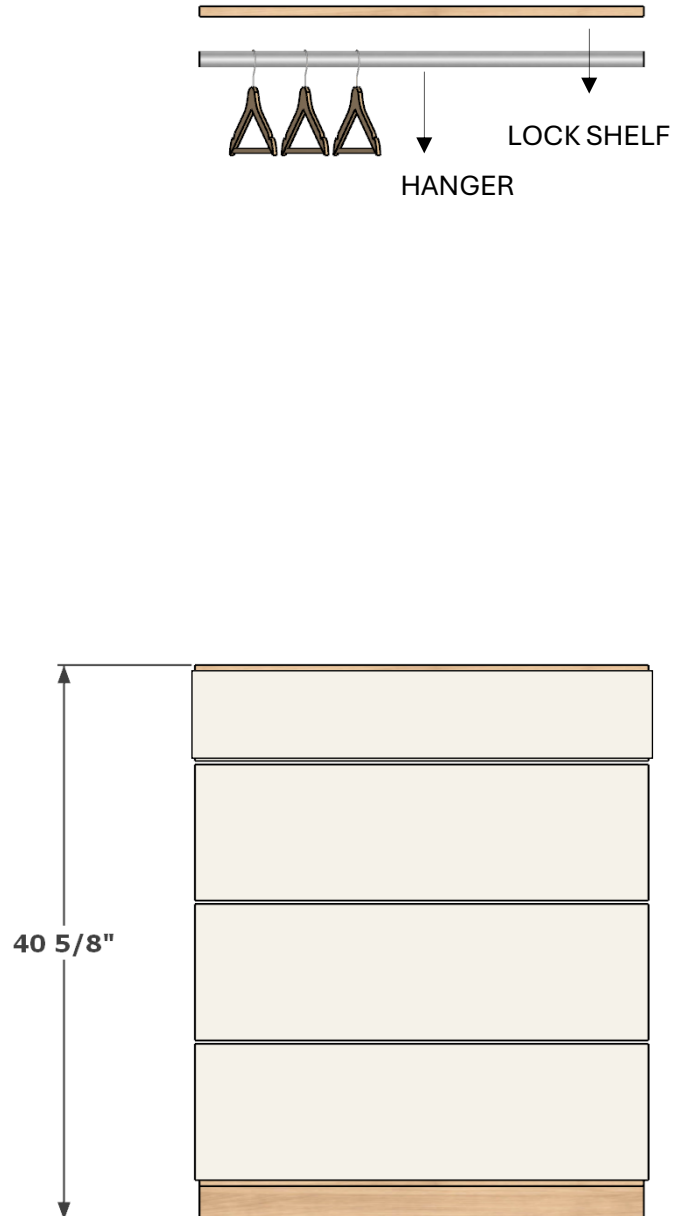
**INCLUDES**

RAFIX	16
PIN	4
DRAWER FRONT	4
METAL DRAWER	4

**WIDE: 18"- 24"- 30"**

### DRAWERS ROD

MOD#301



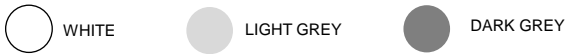
**INCLUDES**

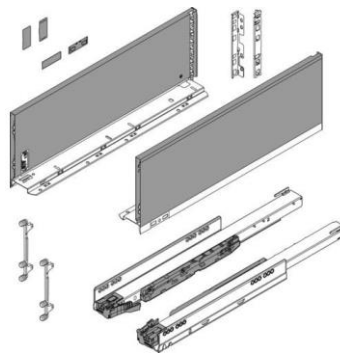
RAFIX	12
TUBE	1
SUPPORT	2
DRAWER FRONT	4
METAL DRAWER	4

# CLOSETS

## DRAWER

### DRAWER METAL SLIM BOXES INCLUDING STANDARD UNDER-MOUNT

DEPTH METAL DRAWER	DEPTH – 14”	DEPTH – 16”	DEPTH – 18”	DEPTH – 20”	DEPTH – 22”
HEIGHT 6”					



DRAWER FRONT	
SOLID COLOR	WOOD COLOR
PB-M002-IM Melamina blanca	PB-WF464 Noce Urban
PB-SF208 Folkstone grey	PB-WF459 Abiqua pine
	PB-WF467 Pelee island
	PB-WF301 Noce vettore
	PB-AF232 Natural linen

# CLOSETS

## DOORS



HINGE SOFT CLOSE



### AVAILABLE COLORS

WF464



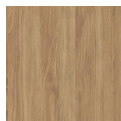
WF459



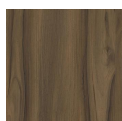
SF232



WF467



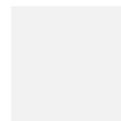
WF301



SF208



M002-IM





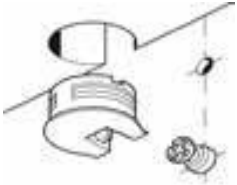
ATLAS  
KITCHEN & CLOSETS

# CLOSETS

HARDWARE &  
ACCESSORIES

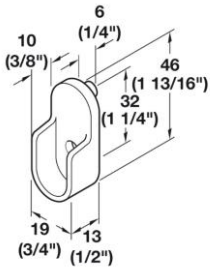
# HARDWARE & FITTINGS

## INCLUDED

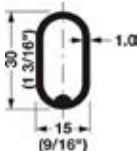


RAFIX	ITEM
GR-50705	Closet, rafix 20 <b>white</b> , for wood 19mm
GR-50405	Closet, rafix 20 <b>beige</b> , for wood 19mm
GR-50105	Closet, rafix 20 <b>brown</b> , for wood 19mm

*Rafix goes according to the color of the selected sheet*



SUPPORT ROD	ITEM
S-O-01430	Oval tube holder zinc alloy, 30mm x 15mm finish chrome plated NO pin
S-O-2701MB	Oval tube holder 30 x 15 matte black No pin
S-O-47054	Oval closet rod support type open 15mm x 30mm finish dull brass NO pin



OVAL ROD	ITEM
TUBEOVAL-2701MB	Oval Closet Rod 30mm x 15mm Steel Matt Black Finish. Long 2440mm (8'), Thickness 1.2mm
TUBEOVAL-30	Oval Closet Rod 30mm x 15mm Steel Plated Chrome Finish. Long 2440mm (8'), Thickness 0.8mm
TUBE-O-47019	Oval Closet Rod 30mm x 15mm, Dull Brass Finish 2.0mm 16 Gauge, Long 2440mm (8')

# ACCESSORIES



HAMPER	ITEM
HAMPER-42232	Wire Laundry Hamper, Tilt Out 23" Width, 13 7/16" depth, chrome + Mounting Bracket, for Slanted Hook-On
HAMPER-42231	Wire Laundry Hamper, Tilt Out 17" Width, 13 7/16" depth, chrome + Mounting Bracket, for Slanted Hook-On



HAMPER	ITEM
HAMPER-52631	Pull-Out Hamper, with Removable Bags, <b>Matt nickel</b> , 18", 1 large bag
HAMPER-52633	HAMPER PULL OUT, with Removable bags <b>Matt nickel</b> , 24", 2 small bags
HAMPER-52635	HAMPER PULL OUT, with Removable bags <b>Matt nickel</b> , 30", 1 large bag-1 small bag
HAMPER-52331	Pull-Out Hamper, with Removable Bags, <b>Matt black</b> , 18", 1 large bag
HAMPER-52333	Hamper pull out, with Removable bags <b>Matt black</b> , 24", 2 small bags
HAMPER-52335	Hamper pull out, with Removable bags <b>Matt black</b> , 30", 1 large bag-1 small bag
HAMPER-52931	Pull-Out Hamper, with Removable Bags, <b>Matt aluminum</b> , 18", 1 large bag
HAMPER-52933	Hamper pull out, with Removable bags <b>Matt aluminum</b> , 24", 2 small bags
HAMPER-52935	Hamper pull out, with Removable bags <b>Matt aluminum</b> , 30", 1 large bag-1 small bag



# ACCESORIES



JEWELRY	ITEM
JD1-24R-GR	Jewelry organizer 24". 10 compartment grey felt. Insert drawer kit, included soft close drawer slide. Depth: 14" height: 2" width 23-7/8
JD1-24R-BL	Jewelry organizer 24" 10 compartment black felt. Insert drawer kit, included soft close drawer slide. Depth: 14" height: 2" width 23-7/8"
JD1-24-GR	Jewelry organizer drawer - grey - soft close - height 4" - width 23-7/8" - depth: 14"
JD1-24-BL	Black felt 5-compartment jewelry organizer drawer -- height 4" Width 3 24-7/8"
ACC-3490	Jewelry organizer - 21-3/8w x 12d
ACC-3490-2	Jewelry organizer - 27-3/8w x 12d



WARDROBE LIFT	ITEM
ACC-31201	Wardrobe lift, chrome finish, 21-1/4 - 26"
ACC-31202	Wardrobe lift, chrome finish, 26" - 35 1/16"
ACC-31203	Wardrobe lift, chrome finish, 35 1/16" - 47 5/8"

# ACCESORIES



BELT RACK	ITEM
BR-54631	Belt rack 6 hook, 14-1/8" with 3/4 extension slide, matt nickel
BR-54931	Belt rack 6 hook, 14-1/8" with 3/4 extension slide, matt aluminum



BELT RACK	ITEM
BR-355-MB	Belt rack 14" double 6 hooks , Matt Black
BR-355-PC	Belt rack 14" double 6 hooks , Chrome
BR-355-SN	Belt rack 14" double 6 hooks , Satin nickel



BELT RACK	ITEM
BELT HOOK-68320	Belt hook stores 5 ties, the are 5mm (3/16")pins. Cleat mount. 3 1/8" W x 3-1/16" D x 5-1/8" H Black

# ACCESORIES



TIE RACK	ITEM
TIE RACK-355T-PC	14" Tie Rack, has 18 hooks to hold for 14" deep closets. Polished Chrome
TIE RACK-355T-SN	14" Tie Rack, has 18 hooks to hold for 14" deep closets. Satin Nickel
TIE RACK-355TORB	14" Tie Rack, has 18 hooks to hold for 14" deep closets. Dark Bronze



TIE RACK	ITEM
TIE RACK-67303	Tie rack, 18 Hook, 13 7/8" With full extension slide Slate
TIE RACK-67603	Tie rack, 18 Hook, 13 7/8" With full extension slide Matt Nickel
TIE RACK-67904	Tie rack, 18 Hook, 13 7/8" With full extension slide Matt Gold



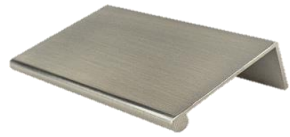
TIE RACK	ITEM
TIE HOOK-68300	Tie hook- black holds 8 ties



PANT RACK	ITEM
PPR-1814-ORB	Dark bronze 18" wide pant rack for 14" depth 17"
PPR-1814-PC	Polished chrome 18" wide pant rack for 14" depth 17"
PPR-2414-SN	Satin nickel 24" wide pant rack for 14" depth 17"

# ACCESSORIES

## HANDLES



	ITEM
H-JS1020-044	Handles I shape 44mm-32mm brush nickel
H-JS1020-075	Handle I shape 75mm-44mm brush nickel
H-JS1020-106	Handle I shape 106mm-76mm brush nickel
H-JS1020-170	Handle I shape 170mm-160mm brush
H-JS1020-230	Handle I shape 230mm-220mm brush nickel



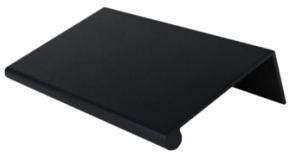
	ITEM
H-JS1020-044SB	Handles I shape 44mm-32mm Champagne
H-JS1020-075SB	Handle I shape 75mm-44mm Champagne
H-JS1020-106SB	Handle I shape 106mm-76mm Champagne
H-JS1020-170SB	Handle I shape 170mm-160mm Champagne
H-JS1020-230SB	Handle I shape 230mm-220mm Champagne



	ITEM
H-JS1020-044B	Handles I shape 44mm-32mm Chrome
H-JS1020-075B	Handle I shape 75mm-44mm Chrome
H-JS1020-106B	Handle I shape 106mm-76mm Chrome
H-JS1020-170B	Handle I shape 170mm-160mm Chrome
H-JS1020-230B	Handle I shape 230mm-220mm Chrome

# ACCESSORIES

## HANDLES



	ITEM
H-JS1020-044MB	Handles I shape 44mm-32mm Matt black
H-JS1020-075MB	Handle I shape 75mm-44mm Matt black
H-JS1020-106MB	Handle I shape 106mm-76mm Matt black
H-JS1020-170MB	Handle I shape 170mm-160mmMatt black
H-JS1020-230MB	Handle I shape 230mm-220mmMatt black



	ITEM
H-JS-2060-096	Modern handle aluminum cc 96 107 L x 10w x 27h brushed nickel
H-JS-2060-128	Modern handle aluminum cc 128 137 L x 10w x 27h brushed nickel
H-JS-2060-160	Modern handle aluminum cc 160 171 L x 10w x 27h brushed nickel
H-JS-2060-192SN	201mm Overall Length Square Holes are 192 mm c-c Brushed Nickel
H-JS-2060-224	Modern handle a2060 aluminum cc 224 - 235 L x 10w x 27h brushed nickel
H-JS-2060-320	modern handle aluminum cc 320 brushed nickel 12-15/16"
H-JS-2060-448	448 mm Center-to-Center Satin Nickel Square Cabinet Bar Pull

# ACCESSORIES

## HANDLES



	ITEM
H-JS-2060-096SB	Modern handle aluminum cc 96 107 L x 10w x 27h satin gold
H-JS-2060-128SB	Modern handle aluminum cc 128 137 L x 10w x 27h satin gold
H-JS-2060-160SB	Modern handle aluminum cc 160 171 L x 10w x 27h satin gold
H-JS-2060-192SB	201mm Overall Length Square Holes are 192 mm c-c satin gold
H-JS-2060-224SB	Modern handle a2060 aluminum cc 224 - 235 L x 10w x 27h satin gold
H-JS-2060-320SB	modern handle aluminum cc 320 satin gold 12-15/16"
H-JS-2060-448SB	448 mm Center-to-Center satin gold Square Cabinet Bar Pull



	ITEM
H-JS-2060-096MB	Modern handle aluminum cc 96 107 L x 10w x 27h Matt black
H-JS-2060-128MB	Modern handle aluminum cc 128 137 L x 10w x 27h Matt black
H-JS-2060-160MB	Modern handle aluminum cc 160 171 L x 10w x 27h Matt black
H-JS-2060-192MB	201mm Overall Length Square Holes are 192 mm c-c Matt black
H-JS-2060-224MB	Modern handle a2060 aluminum cc 224 - 235 L x 10w x 27h Matt black
H-JS-2060-320MB	modern handle aluminum cc 320 Matt black 12-15/16"
H-JS-2060-448MB	448 mm Center-to-Center Matt black Square Cabinet Bar Pull

# ACCESSORIES

## HANDLES



	ITEM
H-JS-2556-096	96mm (4-3/4" h to h) 6" solid handle finish satin nickel
H-JS-2556-128	128mm (5.1/16" h to h) 6" solid handle finish satin nickel
H-JS-2556-160	handles 2556 160mm (6.5/16" h to h) solid handle finish satin nickel
H-JS-2556-192	handles 2556 192mm (7.9/16" h to h) solid handle finish satin nickel
H-JS-2556-224	handles 2556 224mm (8.13/16" h to h) solid handle finish satin nickel



	ITEM
H-JS-2556-096BG	96mm (4-3/4" h to h) 6" solid handle finish Brushed gold
H-JS-2556-128BG	handles 2556 128mm (5.1/16" h to h) 6" solid handle finish Brushed gold
H-JS-2556-160BG	handles 2556 160mm (6.5/16" h to h) solid handle finish Brushed gold
H-JS-2556-256BG	handles 2556 256mm (11.7/16" h to h) solid handle finish Brushed gold



	ITEM
H-JS-2556-096MB	96mm (4-3/4" h to h) 6" solid handle finish Matt black
H-JS-2556-128MB	handles 2556 128mm (5.1/16" h to h) 6" solid handle finish Matt black
H-JS-2556-160MB	handles 2556 160mm (6.5/16" h to h) solid handle finish Matt black
H-JS-2556-256MB	handles 2556 256mm (11.7/16" h to h) solid handle finish Matt black

# ACCESSORIES

## HANDLES



	ITEM
H-JS-0845-096SN	5-3/4" Overall Length Cabinet Pull. Holes are 96 mm center-to-center satin nickel
H-JS-0845-128SN	7-1/16" Overall Length Cabinet Pull. Holes are 128 mm center-to-center.
H-JS-0845-160SN	8-5/16" Overall Length Cabinet Pull. Holes are 160mm center-to-center. satin nickel



	ITEM
H-JS-0845-096BG	5-3/4" Overall Length Cabinet Pull. Holes are 96 mm center-to-center Brushed gold
H-JS-0845-128BG	7-1/16" Overall Length Cabinet Pull. Holes are 128 mm center-to-center. Brushed gold
H-JS-0845-160BG	8-5/16" Overall Length Cabinet Pull. Holes are 160mm center-to-center. Brushed gold



	ITEM
H-JS-0845-096MB	5-3/4" Overall Length Cabinet Pull. Holes are 96 mm center-to-center Matt black
H-JS-0845-128MB	7-1/16" Overall Length Cabinet Pull. Holes are 128 mm center-to-center. Matt black
H-JS-0845-160MB	8-5/16" Overall Length Cabinet Pull. Holes are 160mm center-to-center. Matt black



ATLAS

KITCHEN & CLOSETS



ATLAS  
KITCHEN & CLOSETS

1740 NW 93<sup>rd</sup> Ave Doral, Fl 33172 - 305-640-0515

9401 NW 106<sup>th</sup> Street, Suit 106 Medley Fl 33178 - 786-536-7363

4726 N Lois Ave #A Tampa, Fl 3361 - 305-640-0515 ext 400